



Q-Boat 1800™

Remotely-Operated Instrumentation Boat

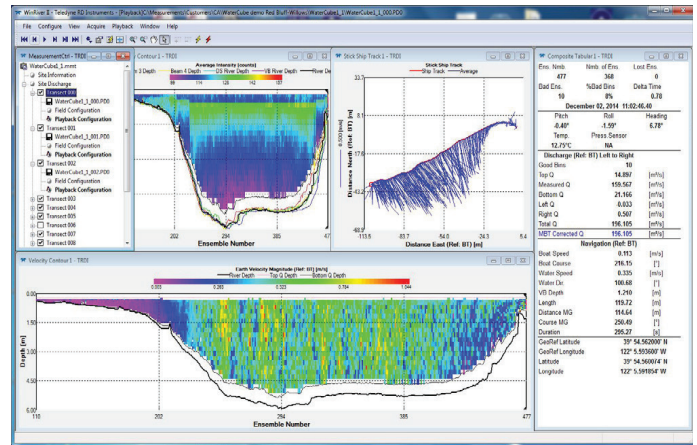
- Modularly expandable with DGPS (e.g. Trimble), radio modem and echo sounder

Q-Boat 1800™

Maximize ADCP Survey Efficiency

The Teledyne Oceanscience Q-Boats are the top choice for reliable remotely-controlled acoustic Doppler current profiling in streams, rivers, lakes and coastal waters all over the world. Reduce your survey time, keep people safe during difficult conditions, or access hard to reach locations with the Q-Boat to suit your survey and budget. Mounts for all popular acoustic Doppler profilers are available as standard.

The Q-Boats provide a total solution to river discharge measurements. The Q-Boat 1800 features twin high power outdrives to give a top speed of 5m/s (16fps) with the security of dual motors. The precision variable speed propulsion allows effective profiling at speeds as low as 30 cm/s (1.0 fps), and is easy to operate in both high and low velocity conditions. Dual steering mechanisms offer added security for safe deployments.



Product features

- Reduce survey time
- No personnel in or over the water
- Real time data to shore laptop
- Fast single or dual-person mobilization
- Not restricted to bridges or taglines
- Multiple instrument adaptability
- High-impact UV resistant ABS

Technical Specifications

Parameter:	Description:
Physical:	Hull Length: 180 cm (5.9 ft.)
	Hull Width: 90 cm (2.95 ft.)
	Weight of Base Boat: 30 kg (66 lbs.)
	Payload: 30 kg (66 lbs.)
	Hull Material: UV Resistant ABS
Remote Control:	Motor: Q-Boat 1800 P
	Navigation Remote Control Unit
	Navigation Remote Control Unit Frequency
	Navigation Remote Control Range
Performance:	Data Telemetry Range - 900 MHz Hydrolink
	Data Telemetry Range - 5.8 GHz Ethernet
	Typical Survey Speed
	Top Speed: Q-Boat 1800 P
Instrumentation:	Battery Endurance: Q-Boat 1800 P
	Battery Pack: Q-Boat 1800 P
	Teledyne RD Instruments RiverRay, Teledyne RD Instruments RiverPro, Teledyne RD Instruments Rio Grande, Teledyne RD Instruments StreamPro, Teledyne RD Instruments Monitor, Sontek RiverSurveyor M9, Linkquest Flowquest

The right is reserved to change or amend the foregoing technical specification without prior notice.

Contact:

SEBA Hydrometrie GmbH & Co. KG • Gewerbestraße 61 A • 87600 Kaufbeuren • Germany
 Telefon: +49 (0) 8341 96 48 - 0 • E-Mail: info@seba.de • Web: www.seba.de